

# JEWELLERY

Minimal jewellery only is permitted, and no obvious make-up or nail polish is to be worn. Minimal jewellery is defined as:

## PIERCINGS:

Apart from earrings, all visible facial and body piercings are banned.

## EARRINGS:

A maximum of two small plain sleepers or simple studs per ear.

## WATCH:

Plain and discreet.

## BRACELETS:

Medical alert bracelet only. Religious bracelets may only be worn with the Principal's written permission.

## RINGS:

One plain ring permitted.

## NECKLACE:

One chain with or without religious/cultural insignia, to be worn under shirt or dress and not to be visible. No other necklaces are permitted.

Safety in practical classes may require students to remove jewellery.

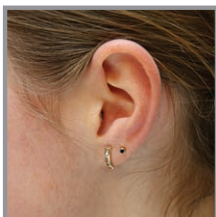
## HAIR ACCESSORIES:

Head scarves for Islamic students should be plain and white or bottle green in colour.

Hair accessories should be white, black or bottle green.

Hair is to be kept clean, tidy and where necessary tied to keep it safe. Only natural hair colour is allowed.

Conservative hair styles.



The Gladstone Park uniform must be worn in a clean and tidy fashion. Boys must be clean shaven. Students are encouraged to follow Sun Smart practices. Dresses and skirts should be no shorter than 10 cm from the middle of the knee.



This Uniform Policy is endorsed by the Gladstone Park Secondary College Council. Sanctions apply for non-compliance.

The items of uniform must be identical to those described, which are obtainable from our official school suppliers.

**The Principal has the ultimate authority to interpret the school uniform.**

**No item of the school uniform may be modified.**



## SCHOOL UNIFORM GUIDE

# GLADSTONE PARK



## GLADSTONE PARK

Taylor Drive, Gladstone Park, VIC 3043

Tel: 9933 0500

Fax: 9335 1862

Email: [gladstone.park.sc@edumail.vic.gov.au](mailto:gladstone.park.sc@edumail.vic.gov.au)

Web: [www.gladstoneparksc.vic.edu.au](http://www.gladstoneparksc.vic.edu.au)

## GIRLS

### GIRLS:

Gladstone Park school dress worn with white socks and school shoes.

### OR

White school shirt with Gladstone Park logo.  
Gladstone Park woollen jumper.  
Gladstone Park tartan skirt with white socks in Terms 1 & 4 and black tights in Terms 2 & 3.

### OR

Tailored grey trousers or tailored grey shorts worn with school shoes.

Green scarf and Gladstone Park school jacket or blazer (optional).



### Where to purchase the school uniform:

On-line shop  
[www.lowesaus.com.au](http://www.lowesaus.com.au)  
LOWES BROADMEADOWS,  
Shop G126 Broadmeadows  
Shopping Centre  
Pascoe Vale Road,  
Broadmeadows 3047

**Phone: (03) 9309 6401**

TOP SCHOOL WEAR  
137 Military Road,  
Avondale Heights 3034

**Phone: (03) 9331 1066**



## BOYS

### BOYS:

White school shirt with Gladstone Park logo.  
Gladstone Park woollen jumper.  
Tailored grey trousers or shorts worn with school shoes and plain white socks.  
Green scarf and Gladstone Park school jacket or blazer (optional).



## SPORT

### GIRLS/BOYS:

School sports shirt with Gladstone Park logo.  
School approved green track suit pants or shorts.  
White socks and supportive runners.



## SHOES & SOCKS



**School Shoes:** black leather lace-up school shoes with a small heel between 1-4cm worn with plain white socks.

**Socks:** plain white above ankle or knee high.