

WEARING UNIFORM **WITH PRIDE****JEWELLERY**

Minimal jewellery only is permitted, and no obvious make-up or nail polish is to be worn.

Minimal jewellery is defined as:

**Piercings:**

One plain stud in the nose up to 2mm.

**Earrings:**

A maximum of two small plain sleepers or simple studs up to 5mm, per ear.

**Watch:**

Plain and discreet.

**Bracelets:**

Medical alert bracelet only.

Religious bracelets may only be worn with the Principal's written permission.

**Rings:**

One plain ring permitted.

**Necklace:**

One chain with or without religious/cultural insignia, to be worn under shirt or dress and not to be visible.

No other necklaces are permitted.

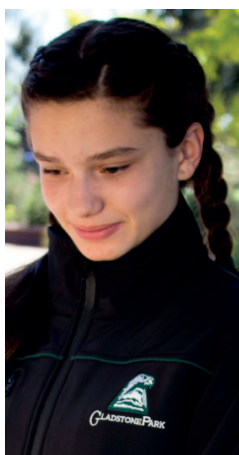
Safety in practical classes may require students to remove jewellery.

**HAIR ACCESSORIES**

Head scarves for Islamic students should be plain and white, black or bottle green in colour.

Hair accessories should be white, black or bottle green.

Hair is to be kept clean, tidy and where necessary tied to keep it safe. Only natural hair colour is allowed.



The Gladstone Park uniform must be worn in a clean and tidy fashion. All students must be of neat appearance. Students are encouraged to follow Sun Smart practices. Dresses and skirts should be no shorter than 10cm from the middle of the knee.

**WHERE TO PURCHASE  
THE SCHOOL UNIFORM****On-line shop**

[www.lowesaus.com.au](http://www.lowesaus.com.au)

**Lowes Broadmeadows**

Shop G126 Broadmeadows Shopping Centre  
Pascoe Vale Road, Broadmeadows 3047  
Phone: (03) 9309 6401

**Top School Wear**

137 Military Road, Avondale Heights 3034  
Phone: (03) 9331 1066

This Uniform Policy is endorsed by the Gladstone Park Secondary College Council. Sanctions apply for non-compliance.

The items of uniform must be identical to those described, which are obtainable from our official school suppliers.

**The Principal has the ultimate authority to interpret the school uniform.**

**No item of the school uniform may be modified.**



Knowledge is Power

**Gladstone Park**

Secondary College

14 - 36 Taylor Drive, Gladstone Park VIC 3043

P: 9933 0500

E: [gladstoneparksc@education.vic.gov.au](mailto:gladstoneparksc@education.vic.gov.au)

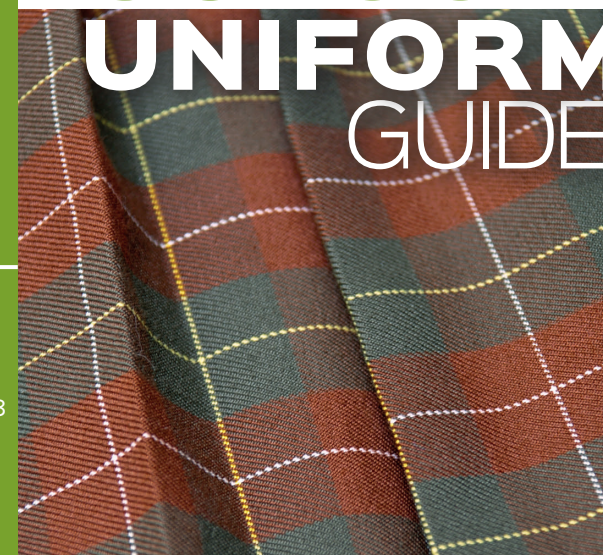
W: [www.gladstoneparksc.vic.edu.au](http://www.gladstoneparksc.vic.edu.au)



# Gladstone Park



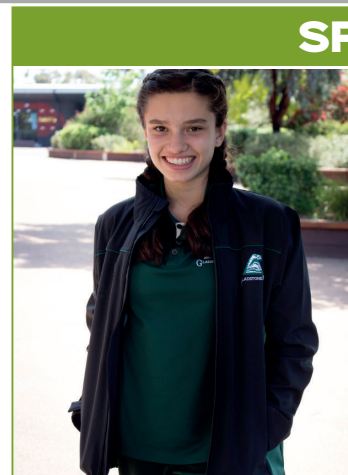
# THE SCHOOL UNIFORM GUIDE





Gladstone Park school dress worn with white socks and black school shoes.

OR



## SPORT

School sports shirt with Gladstone Park logo.

School approved black tracksuit pants or shorts.

Plain white socks and supportive runners.



Gladstone Park tartan skirt worn with white socks or black tights. Worn with black school shoes.

White school shirt with Gladstone Park logo.

Gladstone Park woollen jumper.

OR



Tailored grey trousers or shorts worn with black school shoes.

White school shirt with Gladstone Park logo.

Gladstone Park woollen jumper.



**Optional Items:**  
• Green scarf • School tie • School blazer

## SHOES & SOCKS



**School Shoes:** black leather lace-up school shoes with a small heel between 1-4cm worn with plain white socks, no logo. T-Bars and shoes with buckles or Velcro are not permitted.

**Socks:** plain white above ankle or knee high.